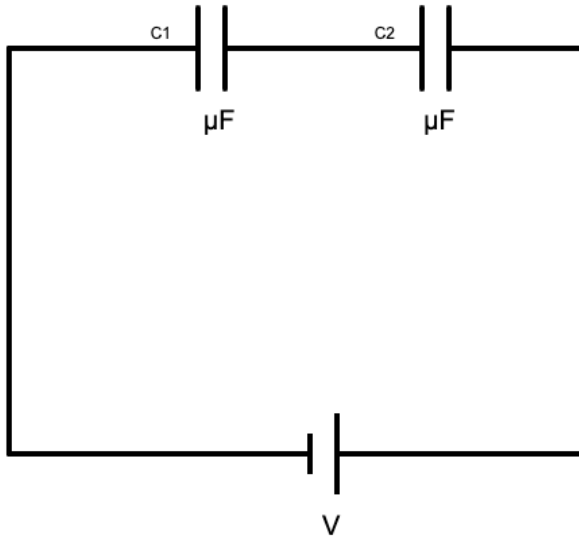


# Charge Stored on Capacitors in Series

Step 1: Fill in the values of your capacitors and your battery.



Step 2: Calculate the total or effective capacitance of this series circuit. Show your work neatly below.

Step 3: Calculate the total charge stored in the circuit. Show your work neatly below.

Step 4: Calculate the voltage across and charge stored in each individual capacitor. Show your work for at least one capacitor. Put all your values for voltage and charges into your picture.

Step 5: Finally, enter your answers into the program to make sure you did everything correctly.